

# **SUV Incubation Stream for International Students**

## EXPRESSION OF INTEREST

- Idea
- Growth Potential
- NB Job Creation Potential
- Fit for NB



## PROTOTYPE DEVELOPMENT

- Funding Options
- Market Testing
- Product Design
- Feasibility



## VALIDATION BY PLANET HATCH

- University Validation
- Process Flows
- Acceleration Programs
- Recommendations

## APPLICATION

- More Detailed
- Done Online
- Evaluated by a Committee
- Decision Typically Within 4 - 6 Weeks

Additional advanced payment of \$2180 is required to receive the commitment certificate after clearing the Due Diligence stage. Includes 6 months of membership with Planet Hatch upon arrival.

If rejected at this stage, the applicant is informed of alternative provincial immigration programs and exits the SUV Pipeline.

## DUE DILIGENCE COMMITTEE

- MVP & Growth Potential
- Business Plan
- NB Job Creation Potential
- Fit for NB



## IRCC ASSESSMENT

- Language
- Financial Means
- Letter of Support
- PH Membership Agreement



## COMMITMENT CERTIFICATE

- Signed PH Membership Agreement
- Letter of Support
- Work Visa Application
- PR Application

## AFTER WORK PERMIT

- Onboarding Timeline With PH
- NB Business Incorporation
- Other Formalities



If the Prototype is successful \$1000 must be paid by the applicant to proceed to the Due Diligence stage.

If rejected, the applicant exits the SUV Pipeline & is informed of alternative provincial immigration programs. There is a possibility for re-application once all criteria is met.

# **SUV Incubation Stream for International Startups**

## EXPRESSION OF INTEREST

- Idea
- Growth Potential
- NB Job Creation Potential
- Fit for NB



## APPLICATION

- More Detailed
- Done Online
- Evaluated by a Committee
- Decision Typically Within 4 - 6 Weeks

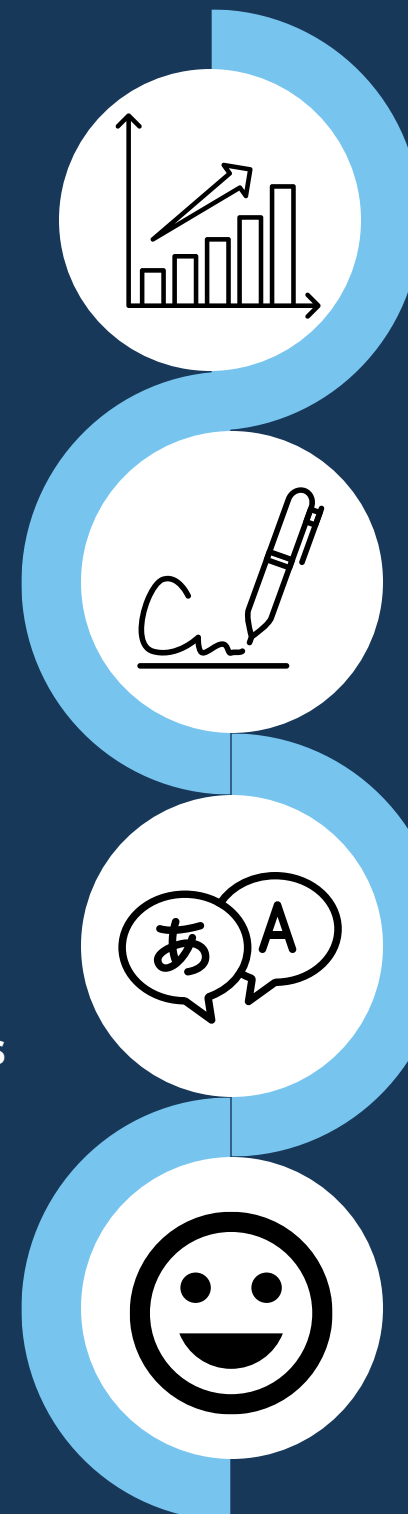


Additional advanced payment of \$2180 is required to receive the commitment certificate after clearing the Due Diligence stage. Includes 6 months of membership with Planet Hatch upon arrival.

If rejected at this stage, the applicant is informed of alternative provincial immigration programs and exits the SUV Pipeline.

## DUE DILIGENCE COMMITTEE

- MVP & Growth Potential
- Business Plan
- NB Job Creation Potential
- Fit for NB



## COMMITMENT CERTIFICATE

- Signed PH Membership Agreement
- Letter of Support
- Work Visa Application
- PR Application

## IRCC ASSESSMENT

- Language
- Financial Means
- Letter of Support
- PH Membership Agreement

## AFTER WORK PERMIT

- Onboarding Timeline With PH
- NB Business Incorporation
- Other Formalities

If the Prototype is successful \$1000 must be paid by the applicant to proceed to the Due Diligence stage.

If rejected, the applicant exits the SUV Pipeline & is informed of alternative provincial immigration programs. There is a possibility for re-application once all criteria is met.